

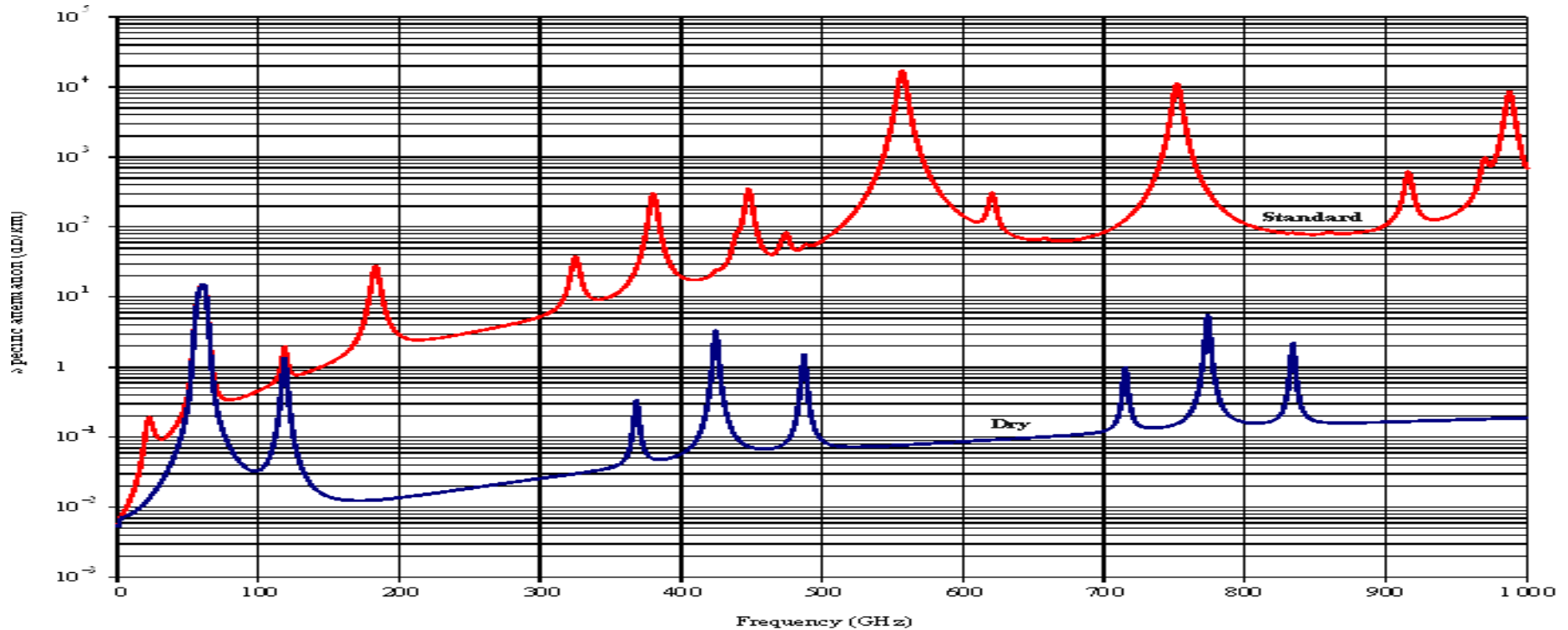
80GHz Update

Jim Moss

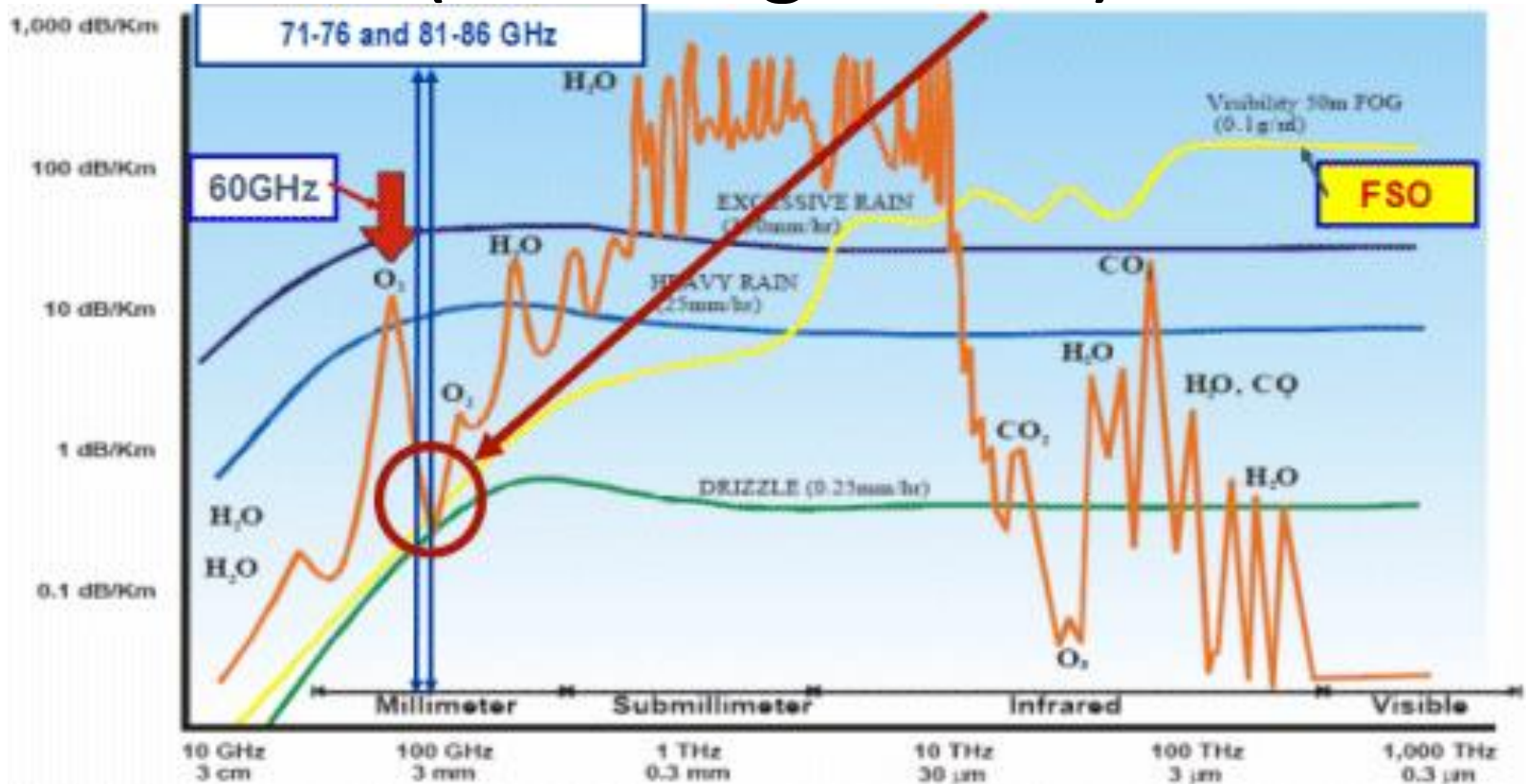
N9JIM

February 4, 2020

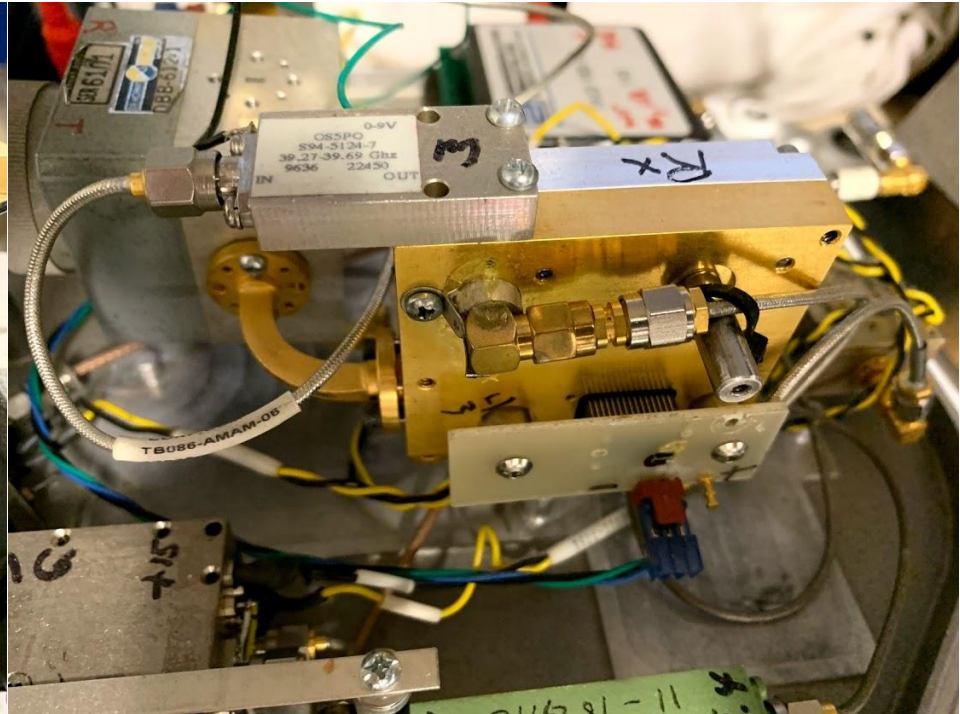
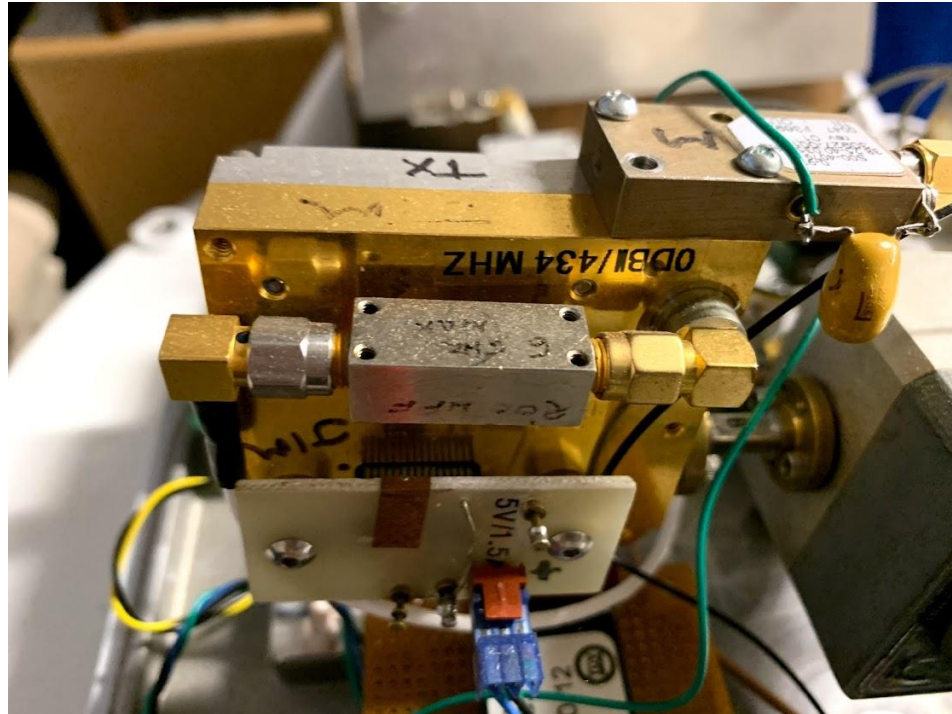
Specific Attenuation ITU-R (dB/km)



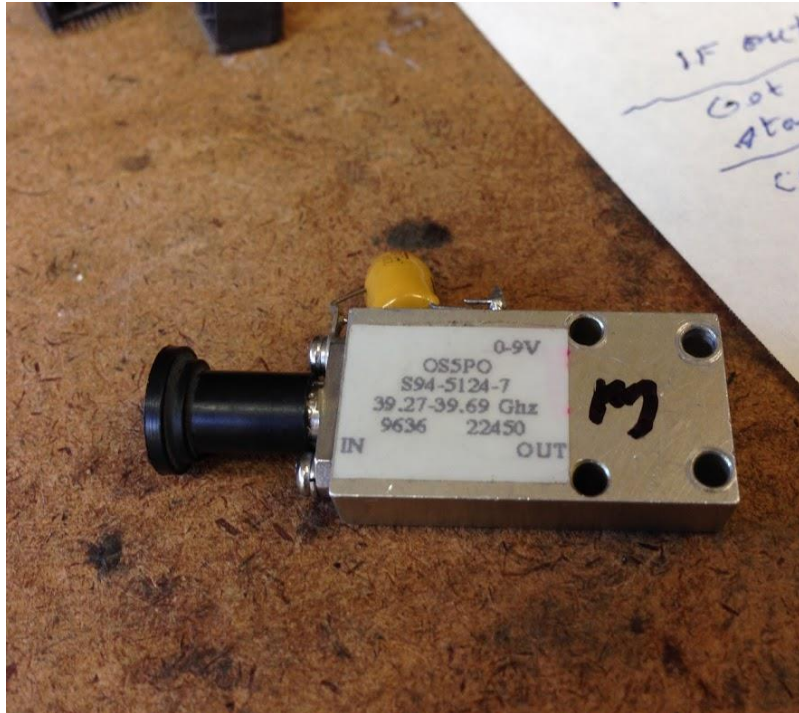
80GHz Propagation (from Gigabeam)



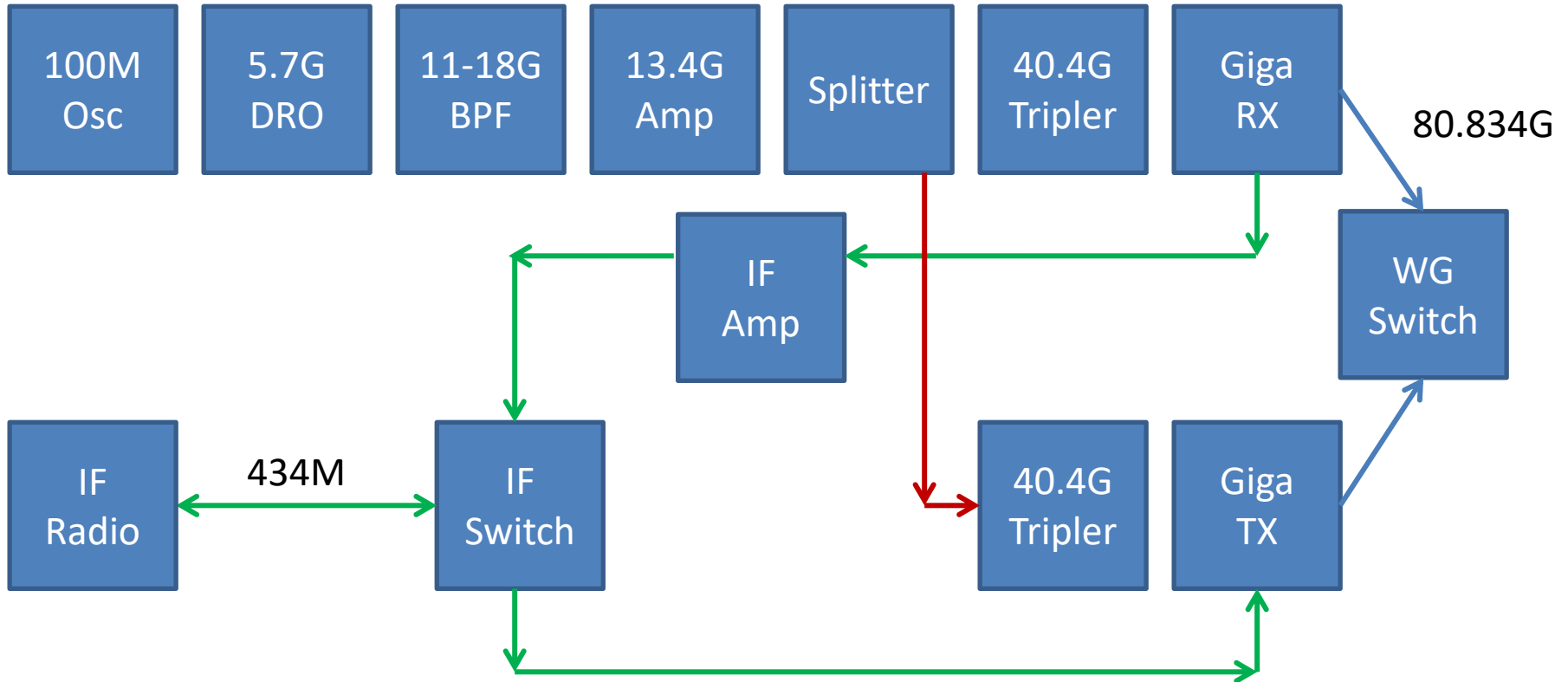
TX and RX Gigabeam modules



40GHz Tripler & Gigabeam Modules



RF Block Diagram



Finished

100MHz Ref Osc

6.7 GHz DRO
locked

11-18G BPF

13.4G amp

13.4G Splitter

40.2G tripler

Gigabeam RX

WR15 Switch

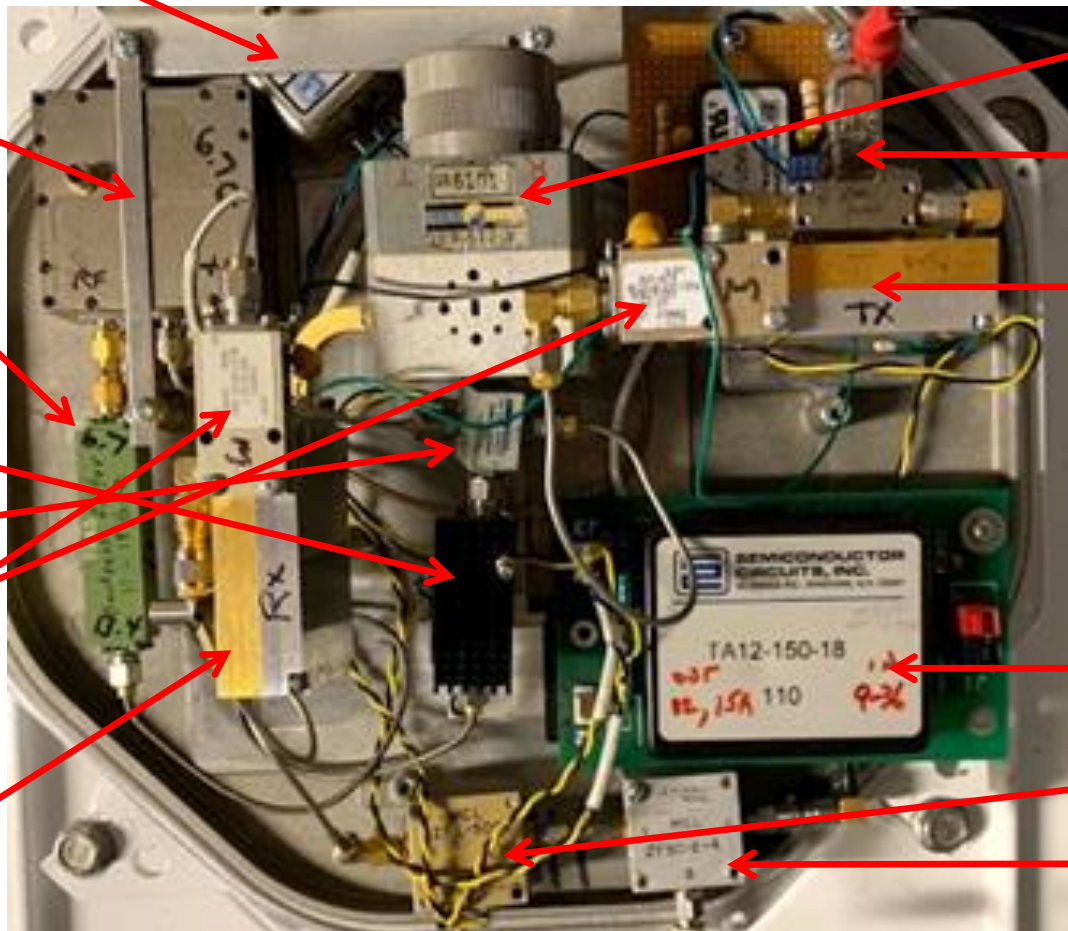
Bias voltages

Gigabeam TX

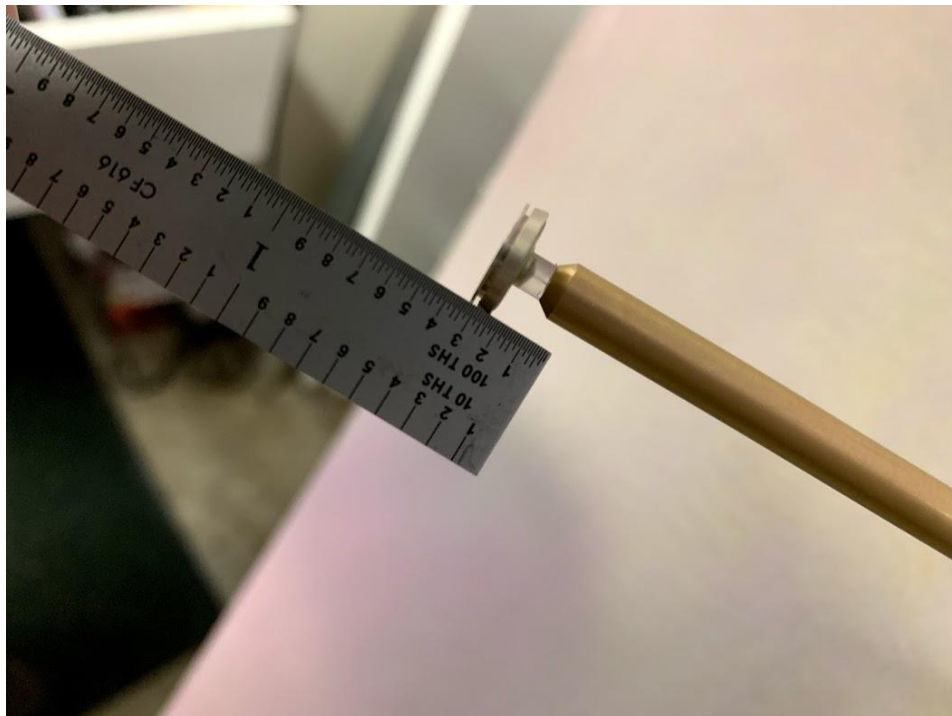
12V supply

434MHz LNA

434MHz Switch

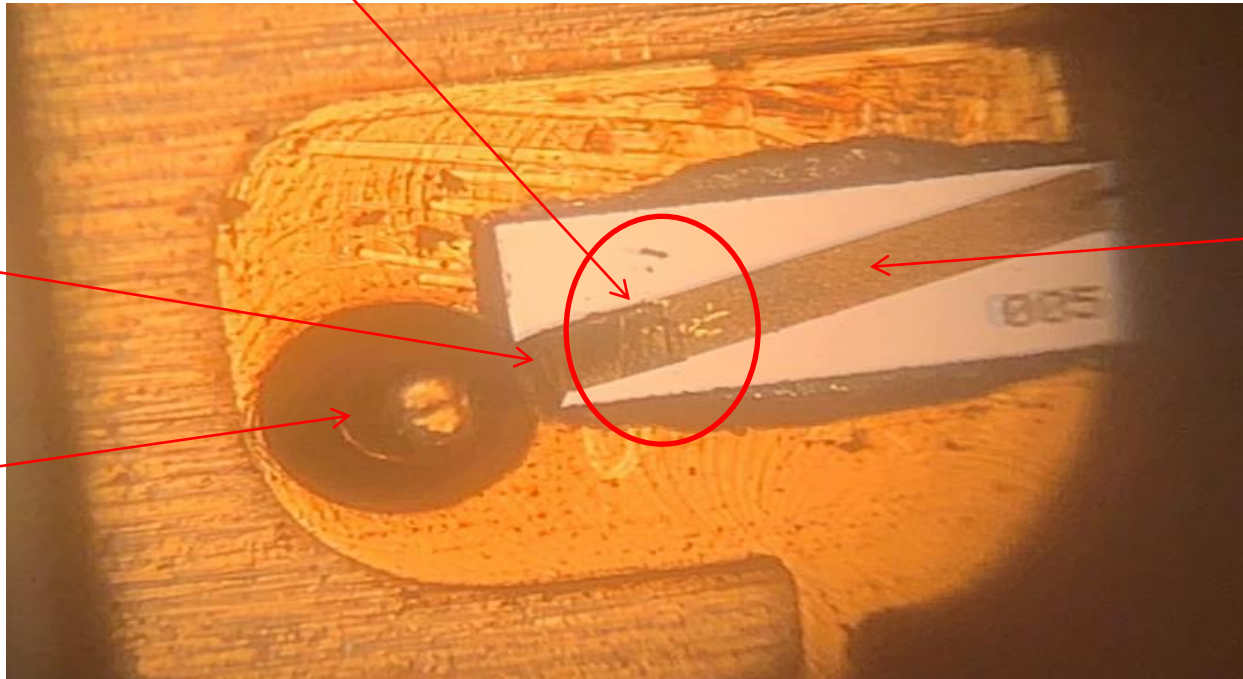


GigaBeam 24" dish



Ribbon to substrate

Bad connection at "weld". Moves easily when probed. No continuity.



Gold foil ribbon

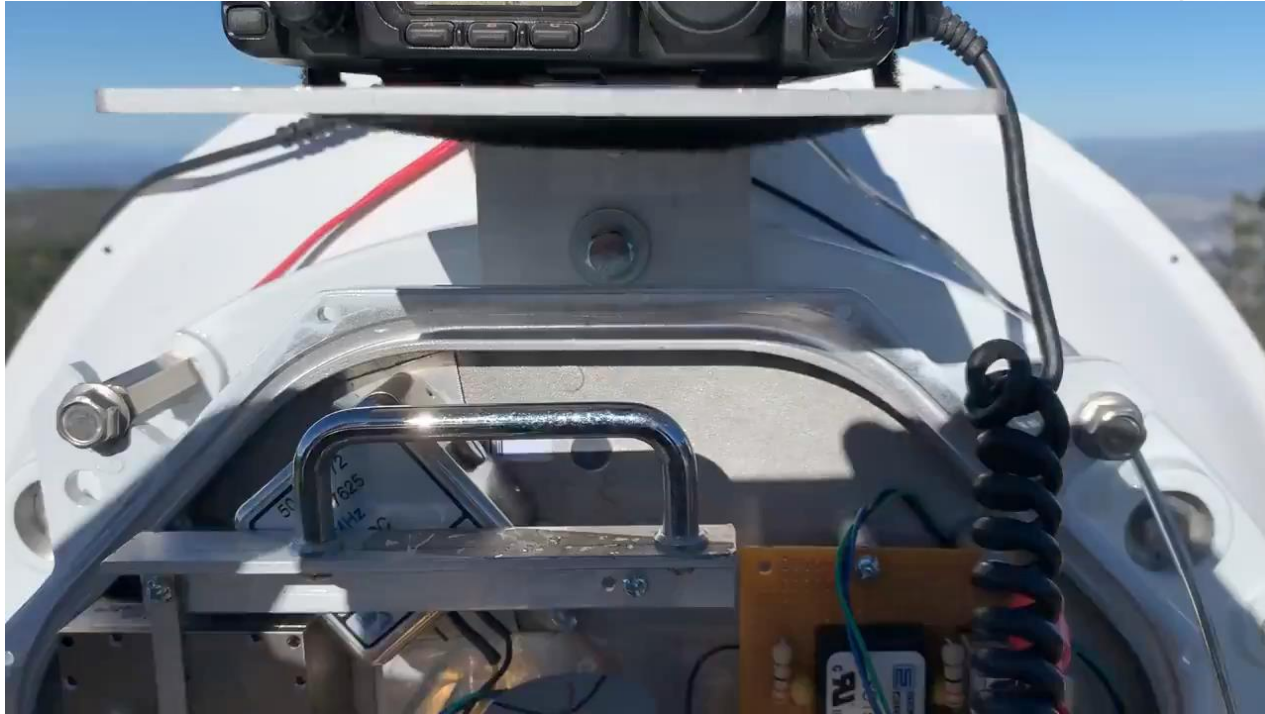
Substrate trace

Connector center pin
Soldered to gold ribbon

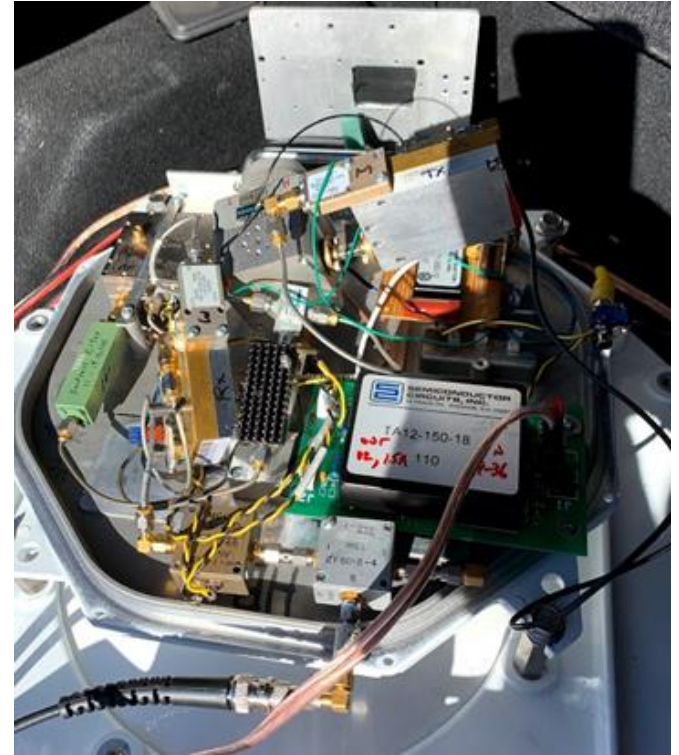
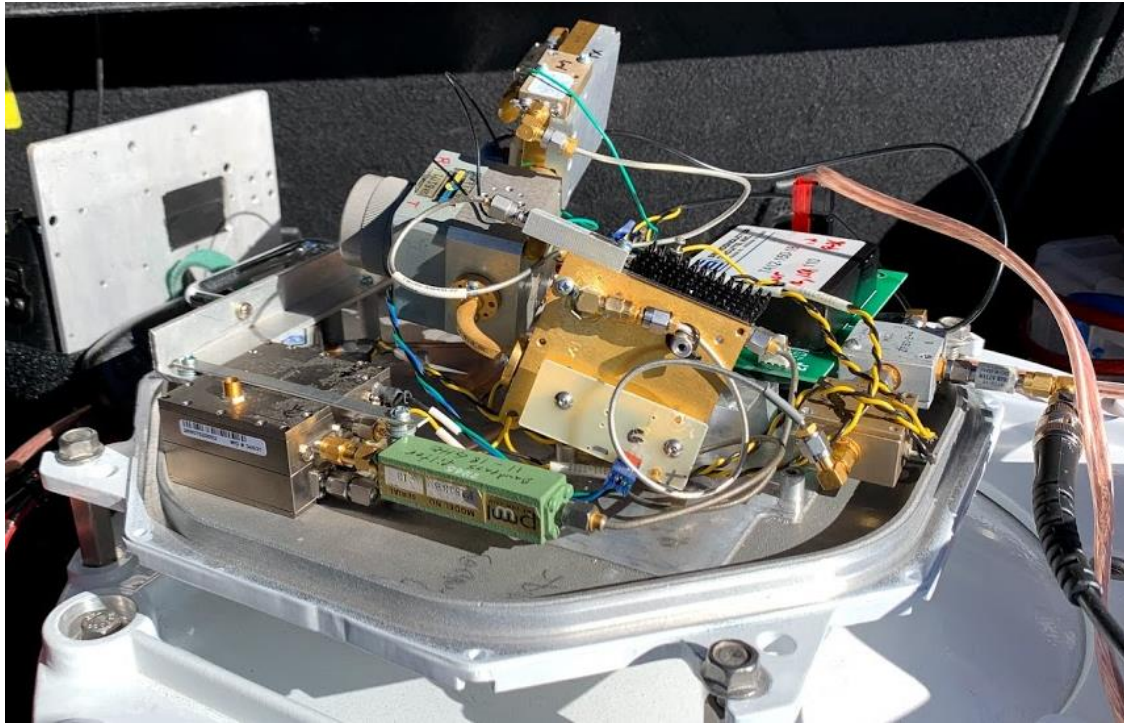
Finished & on Mt Umunhum



Mt Umunhum to Mt Vaca N9JIM – AD6IW (80 miles)

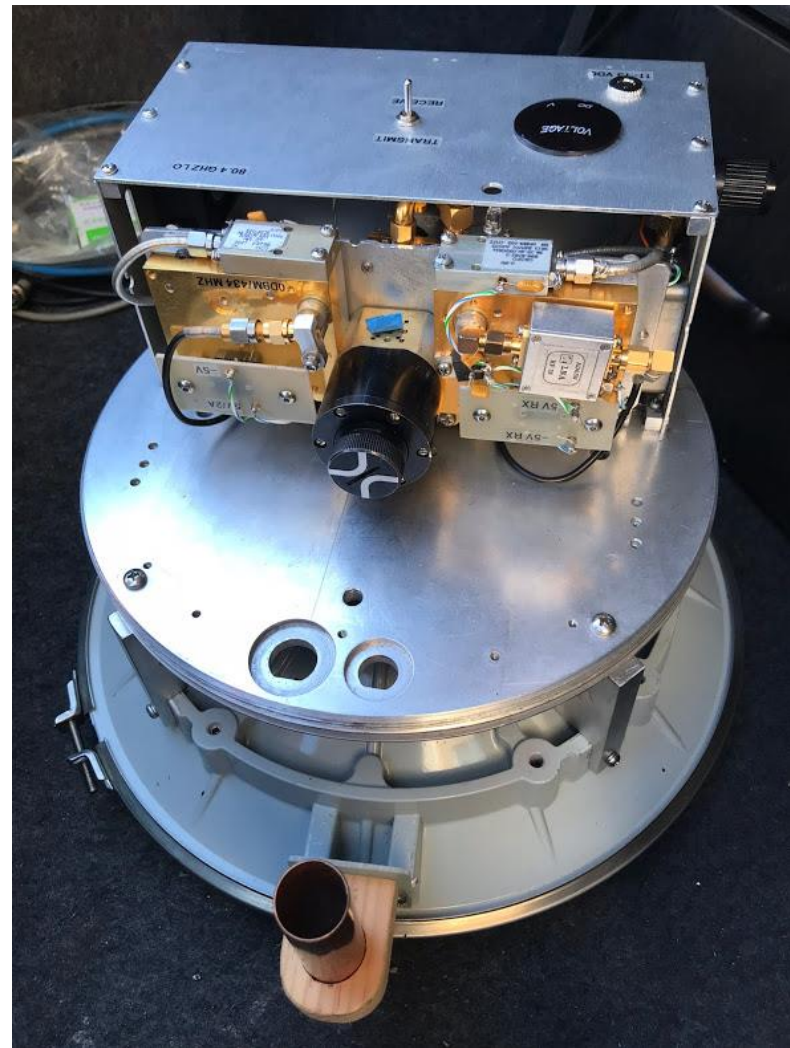


Disturbed layout after blowover

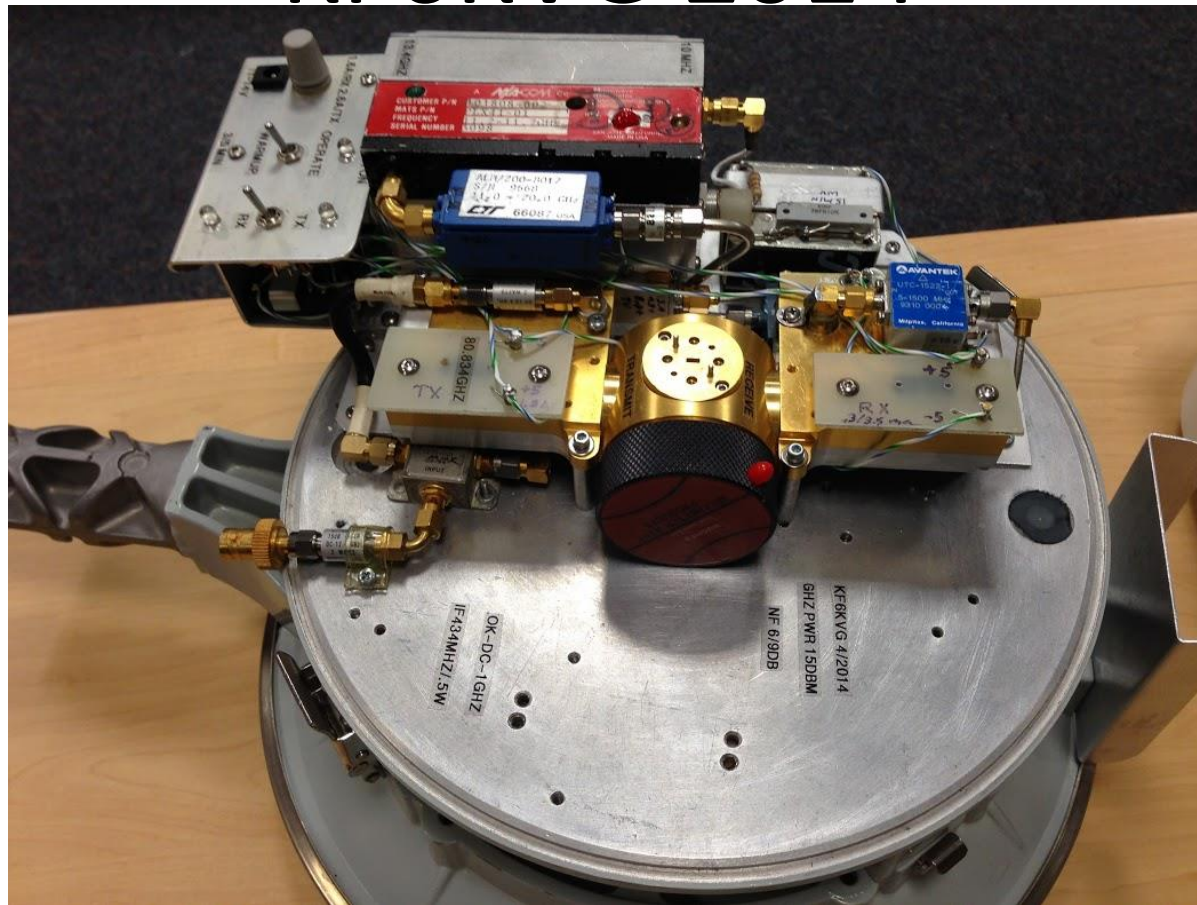


PICTURES OF OTHER RIGS

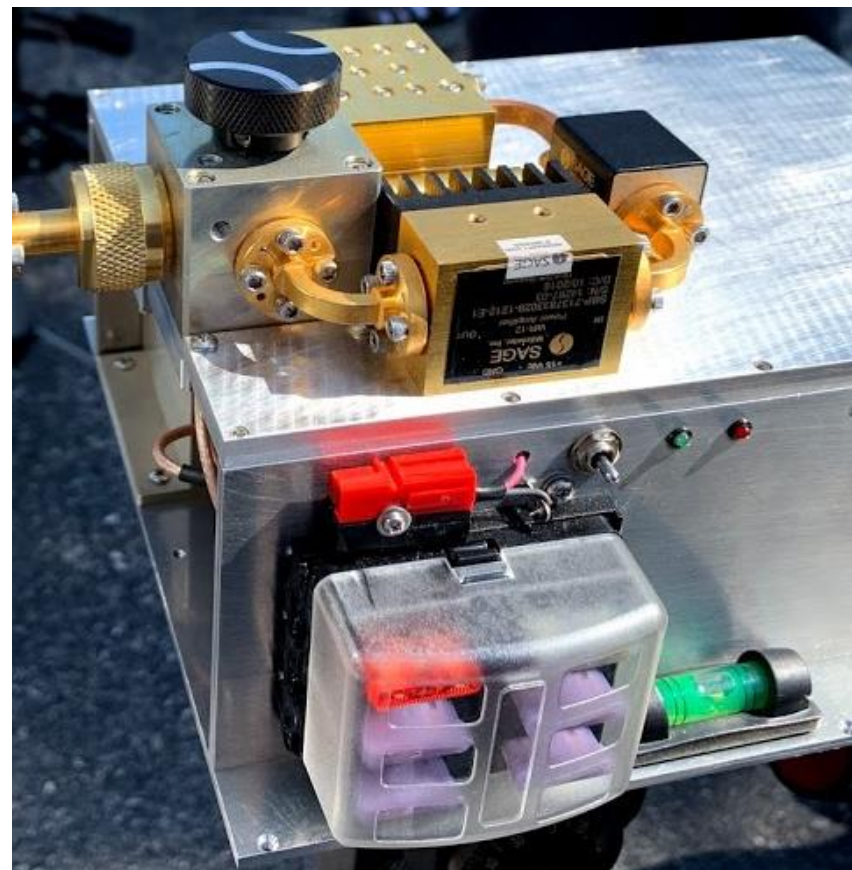
The Master Bob – KF6KVG (2017)



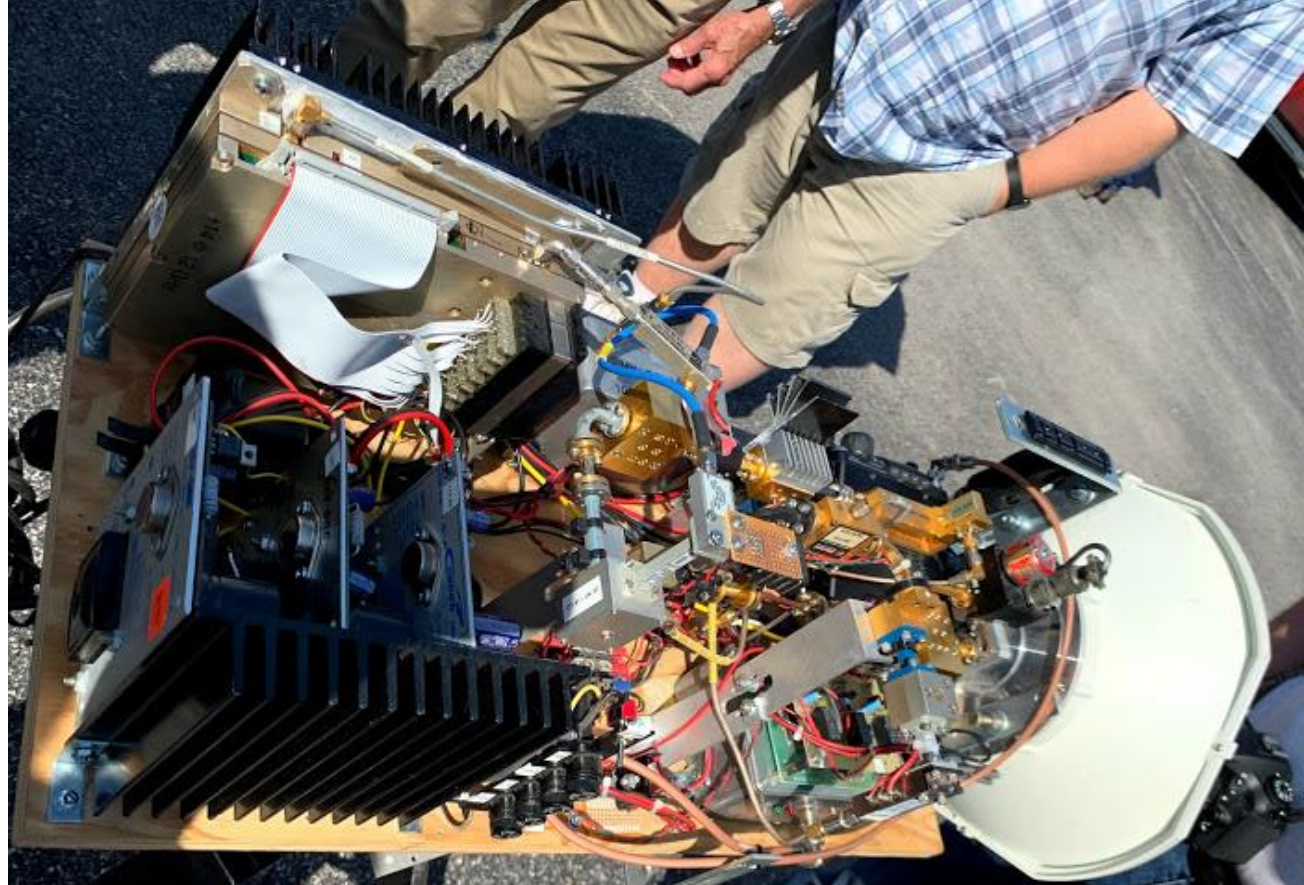
KF6KVG 2014



KOUO -



VE4MA Barry



?? Khune

